

Sony DADC

Visit our homepage for further details on our packaging solutions:
www.sonydadc.com

Audio Slipcase for 1-5 Jewelcases

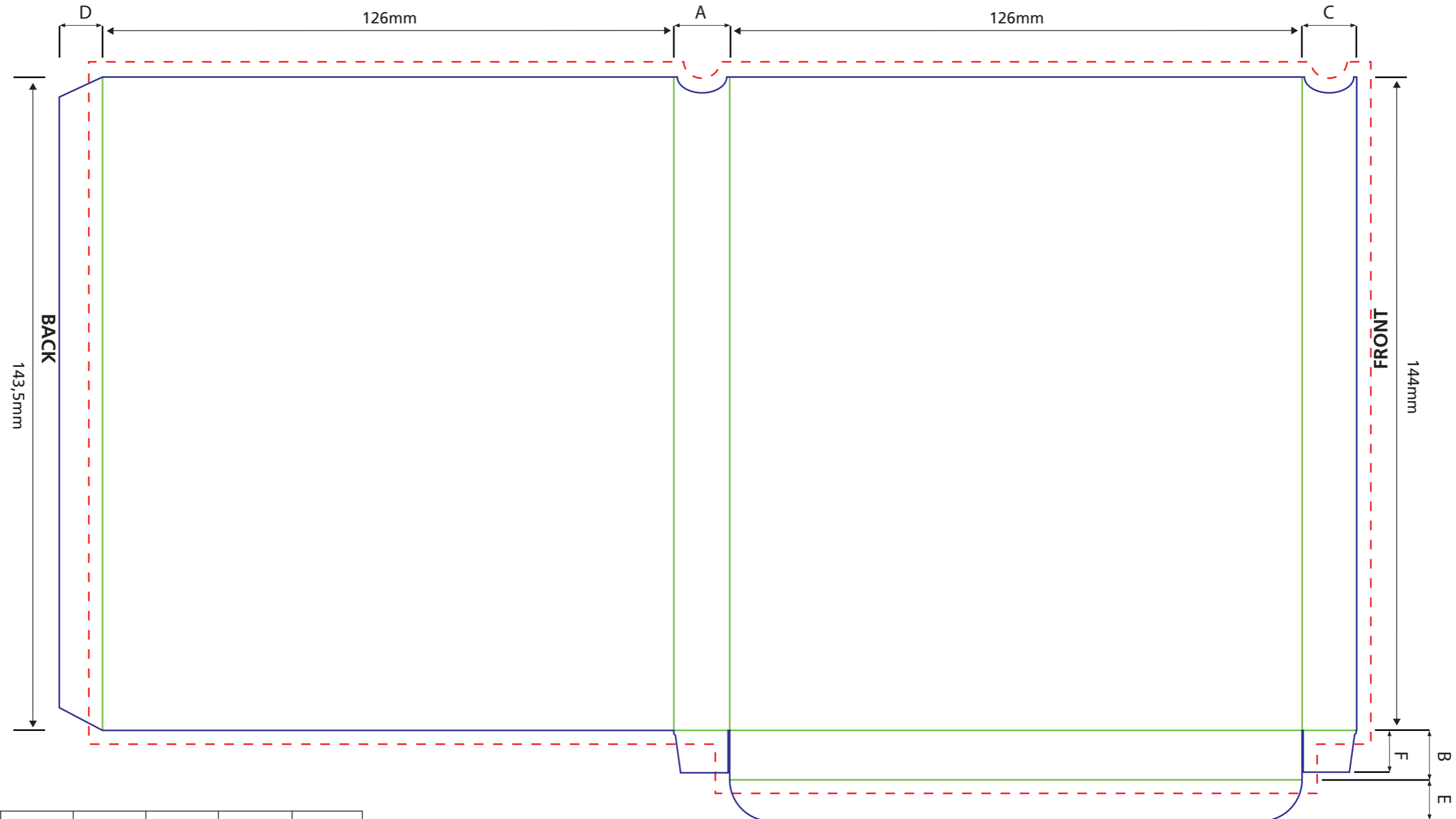
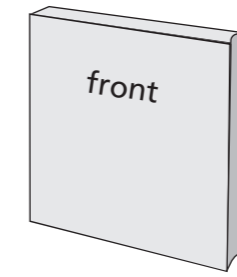
280 gsm cardboard

Scale 1:1

--- Bleed (min. 3mm)

--- Artbox (Logos and text have to be placed at least 3mm away from cutting lines.)

— Cutting line — Folding line



| Anzahl Jewel Case | A | B | C | D | E | F |
|-------------------|------|------|------|------|------|------|
| 1 | 12,5 | 11,0 | 12,0 | 9,5 | 9,0 | 9,5 |
| 2 | 23,0 | 21,5 | 22,0 | 15,0 | 10,0 | 20,0 |
| 3 | 32,7 | 31,2 | 32,2 | 15,0 | 19,0 | 25,0 |
| 4 | 43,2 | 41,7 | 42,7 | 15,0 | 19,0 | 25,0 |
| 5 | 53,7 | 52,2 | 53,2 | 15,0 | 19,0 | 25,0 |